



## Russia, Moscow, Ulitsa 1812 Goda, 7

67 000 RUB per month

ID ref # 204

### DESCRIPTION

Agency fee:	60%		
Type of deal:	for a long-term rent		
Property type:	2-room (1 BR) apartment		
Square meters:	60 sq.m.		
Minutes to the closest metro:	5 by foot		
Metro:	Park Pobedy		
Rooms (sq.m.):	30-16		
Kitchen (sq.m.):	30		
Balcony:	1		
Bathrooms:	1		
Building type:	Stalin-era		
Floor number:	4 of 8		
View:	to the yard		
Parking space:	Spontaneous parking in the yard		
Accommodations:	Fridge, Washing machine, Dryer machine, TV set, Air-conditioning, Microwave, Iron and iron board, Dishes, Sheets and towels, Dishwasher		
Form of payment:	Cash, Bank transfer from physical person, Bank transfer from legal entity		

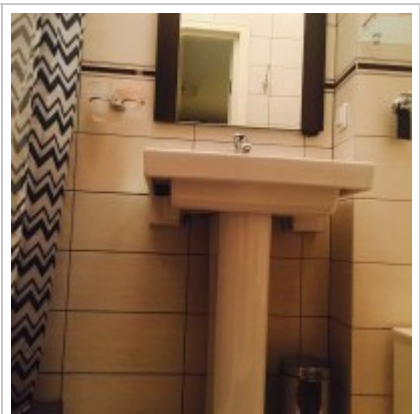
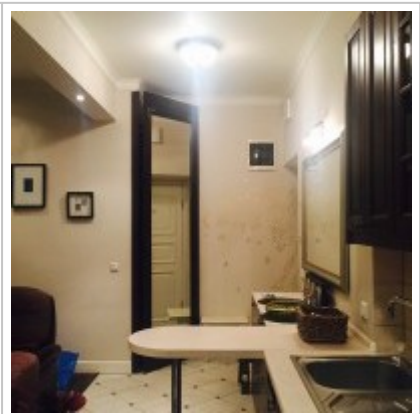
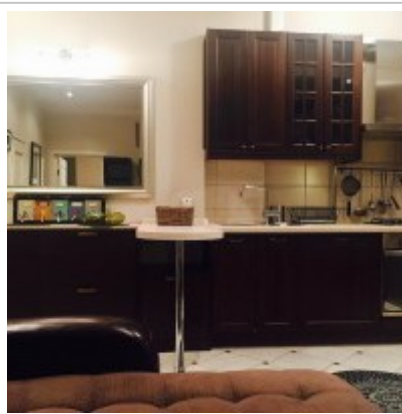
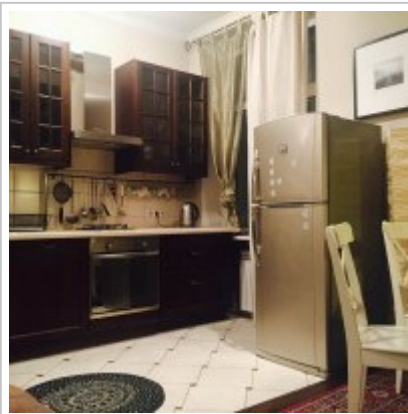
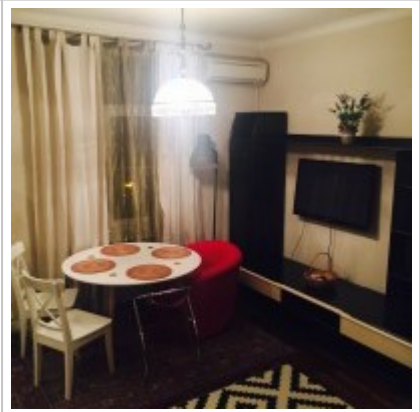
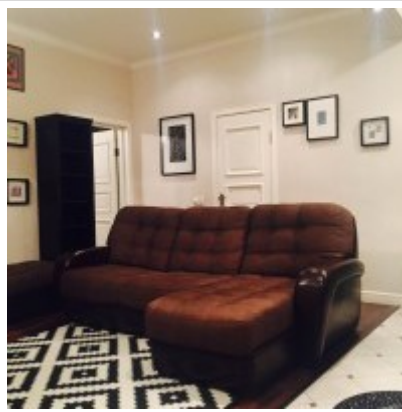
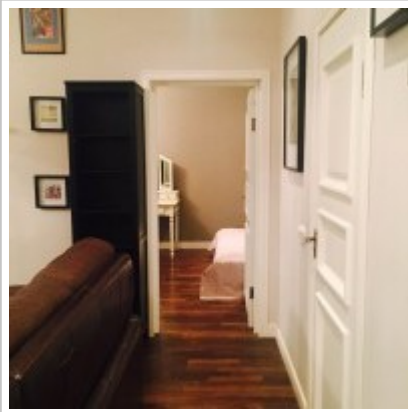
**Tenant's payments:**

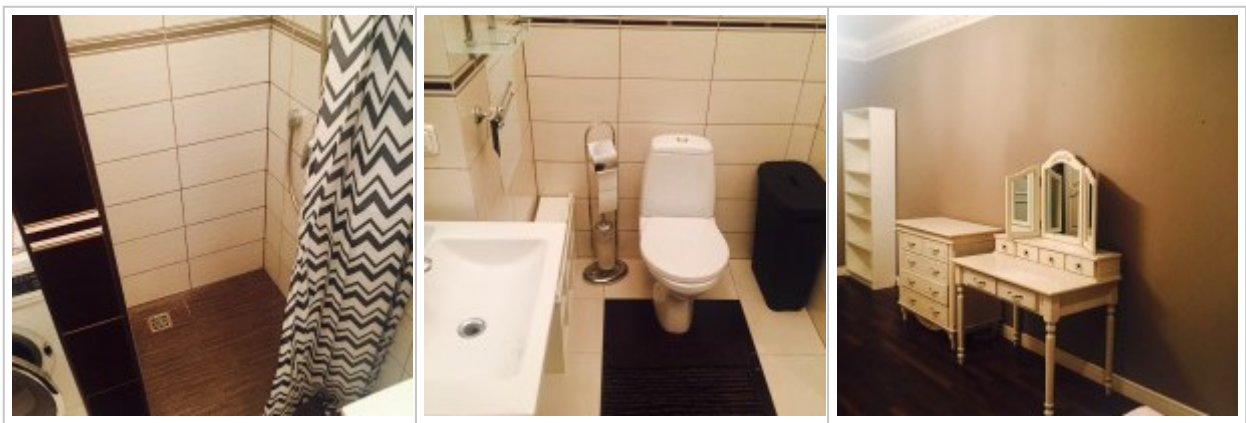
100% Deposit, Electricity bills, Water bills, Internet, Satellite TV

**Description:**

Wonderful apartment. Fully equipped with everything necessary for a comfortable stay. Beautiful design. Spacious rooms. Loyal owner. The apartment is very quiet. Well-developed infrastructure.

**PHOTO**






---

## Contacts

---

Phone:	+7 (966) 3801075 (en/ru)
Email:	<a href="mailto:moscow-rentals@yandex.ru">moscow-rentals@yandex.ru</a>
Web-site:	<a href="http://moscow-rentals.ru">moscow-rentals.ru</a>
WhatsApp:	+7 966 380 1075
Facebook:	<a href="https://www.facebook.com/MoscowExpatRentals">www.facebook.com/MoscowExpatRentals</a>
Telegram:	<a href="https://t.me/MoscowExpatRentals">https://t.me/MoscowExpatRentals</a>
Working days:	Mon, Tue, Wed, Thu, Fri
Hours:	10:00 - 18:00
Category:	Real Estate agency
Services:	Property rent and sale

---

© Moscow Rentals, 2015. All rights reserved.

This website is for informational purposes only and is not a public offer defined by the provisions of Article 437 of the Civil Code of the Russian Federation. Copying of the website materials is possible only with the written permission of the site administration.