

Russia, Moscow, Gasheka Str, 6

1 041 889 RUB per month

ID ref # 2756

DESCRIPTION

Agency fee:	0%
Type of deal:	for a long-term rent
Property type:	Office
Square meters:	208 sq.m.
Minutes to the closest metro:	8 by foot
Metro:	Belarusskaya, Mayakovskaya
Class:	A
Building type:	Business center
Parking:	Underground
Condition:	Office repair
Entrance:	Entrance pass
Floor:	11



Description:

✘
A great Class A business center in a perfect location in the center of Moscow close to Mayakovskaya and Belarusskaya metro stations-

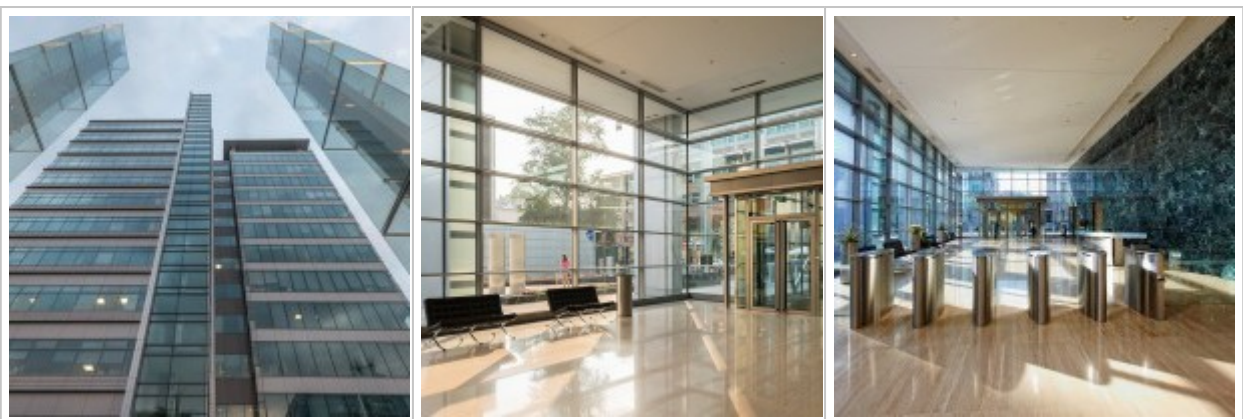
- 8-minutes walk from Mayakovskaya metro station-
- Presentable entrance-

- Underground (467) and outside (27) parking-
- Neighbors/ other tenants: Goldman Sachs, Jones flay, Sony Pictures, BCG Skadden, Arps, Sovcomflot (2 466 квм), Clifford Chance, CW, LW, Citibank- Infrastructure: a corporate kindergarten, Cafeteria, cafes, fly cleaner's-
- Easy access to Sheremetyevo airport- 9 elevators-
- BREEAM Certificate-

CONDITIONS :

- The rental price is 650 USD per sq m/ per year (excluding VAT).
- Utility bills (water and electricity) are paid above the rent according to the consumed amounts-
- Operational costs are not included- In 2018 it was 9350 rubles/ sq m/ year-
- The rent for a parking space is 350 USfl per month (excluding VAT)-
- The minimum rent is 3 months-
- The security deposit is a 3-month rental amount-

PHOTO





Contacts

Phone:	+7 (966) 3801075 (en/ru)
Email:	moscow-rentals@yandex.ru
Web-site:	moscow-rentals.ru
WhatsApp:	+7 966 380 1075
Facebook:	www.facebook.com/MoscowExpatRentals
Telegram:	https://t.me/MoscowExpatRentals
Working days:	Mon, Tue, Wed, Thu, Fri
Hours:	10:00 - 18:00
Category:	Real Estate agency
Services:	Property rent and sale

© Moscow Rentals, 2015. All rights reserved.

This website is for informational purposes only and is not a public offer defined by the provisions of Article 437 of the Civil Code of the Russian Federation. Copying of the website materials is possible only with the written permission of the site administration.