



Russia, Moscow, Mytnaya Str, 7C2

300 000 RUB per month

ID ref # 4449

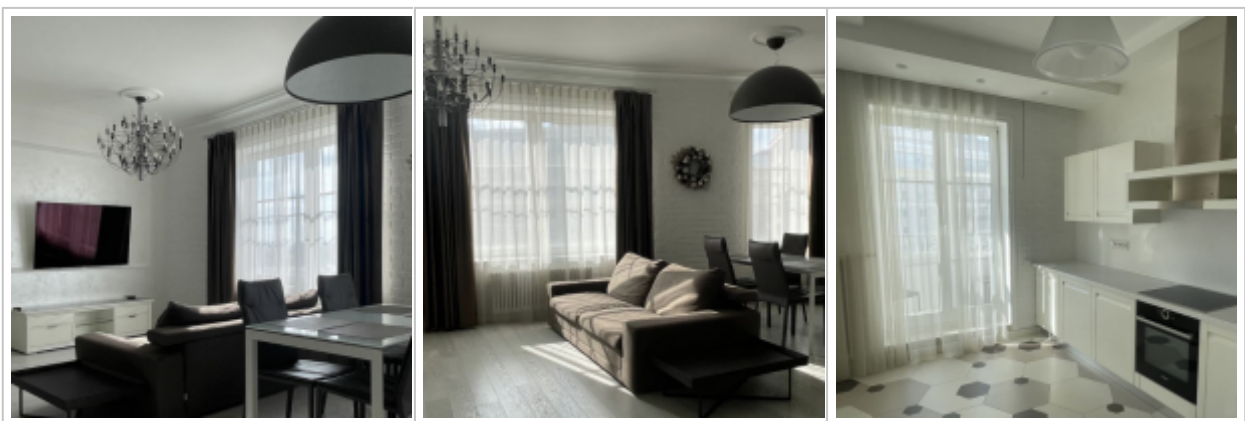
DESCRIPTION

Agency fee:	100%
Type of deal:	for a long-term rent
Property type:	3-room (2 BR) apartment
Square meters:	130 sq.m.
Minutes to the closest metro:	8 by foot
Metro:	Dobryininskaya, Serpuhovskaya, Shabolovskaya
Balcony:	2
Bathrooms:	2
Building type:	Modern business class
Floor number:	11 of 17
View:	to the yard
Parking space:	1
Accommodations:	Fridge, Washing machine, TV set, Air-conditioning, Dishwasher
Form of payment:	Cash, Bank transfer from physical person, Bank transfer from legal entity
Tenant's payments:	100% Deposit, Electricity bills, Water bills, Internet
Description:	Spacious, bright and cozy apartment on the 11th floor of the Britannica tower in the premium residential complex "English Quarter". The apartment has a large hall with panoramic windows that allow you to enjoy views of the center



of the capital, the Kremlin, Moscow City and the Cathedral of Christ the Savior. The apartment is equipped with all necessary appliances and air conditioning in every room. Underfloor heating in the large loggia allows you to enjoy the views even in winter. There is a boiler, as well as a laundry room. The rental price also includes one underground parking space. The English Quarter is one of the largest premium residential complexes in the center of Moscow. The main difference between a block and an ordinary residential complex is its scale. The large territory, more than 4 hectares, allows you to create a unique oasis in the center of Moscow. Despite the fact that it is located in the center, it is a quiet place. Near the "English Quarter" there are no busy highways and large traffic flows, which has a positive effect on the environment. The block is located between the Garden Ring and the Third Transport Ring, and both highways can be freely accessed at any time of the day, avoiding traffic jams. Access to any part of the city is carried out through these main city "arteries". Very convenient access to Leninsky Prospekt, Bolshaya Yakimanka, Bolshaya Polyanka and Pyatnitsky streets. In the immediate vicinity of the residential complex there are 5 metro stations at once - "Shabolovskaya", "Dobryninskaya", "Serpukhovskaya", "Oktyabrskaya" and "Tul'skaya". Security is ensured by the presence of a metal fence, a checkpoint access system, round-the-clock video monitoring of the territory, concierges and an alarm system. The entrances are equipped with video intercoms. Underground two-level Parking is located under the complex.

PHOTO





Contacts

Phone:	+7 (966) 3801075 (en/ru)
Email:	moscow-rentals@yandex.ru
Web-site:	moscow-rentals.ru
WhatsApp:	+7 966 380 1075
Facebook:	www.facebook.com/MoscowExpatriateRentals
Telegram:	https://t.me/MoscowExpatriateRentals
Working days:	Mon, Tue, Wed, Thu, Fri
Hours:	10:00 - 18:00
Category:	Real Estate agency
Services:	Property rent and sale

© Moscow Rentals, 2015. All rights reserved.

This website is for informational purposes only and is not a public offer defined by the provisions of Article 437 of the Civil Code of the Russian Federation. Copying of the website materials is possible only with the written permission of the site administration.